

# Hadstock Magazine



---

FEBRUARY 2021

---

## Beginnings – Editors Page

Dear Readers, Happy New Year!

I hope you have been well and occupied during this reduced Christmas and latest lock down. I thought the magazine might be smaller -less pages -this time but no I was wrong. Well done for sending in lots of photos, birds, paintings and even some vaccinations. Have you had one yet? Won't it be great when every one you know and care about has had at least one jab. And all of the EU. I hope we're not going to argue about vaccines as well as fish. The task of vaccinating the whole world is just mammoth! We will all need to co operate with one another to achieve it. Countries I mean as well as individuals. What a problem.

How would you tackle it/fix it?? Would you like to be in government now? Sounds like time for another set of poems about cooperation, organisation and hope. See what you can come up with. Doesn't have to be long, - a ditty will do How would you vaccinate the world.?

Then how about some photos or stories about your pets. I'm really missing having a cat and/or dog now. They really are great companions. Why not tell us all about yours?

Have you noticed, I'm trying out a new font. I think it's clearer but maybe a little harder on the eyes. Let me know what you think please.

Finally Congratulations to Olly and Sarah who had a baby boy Harry who is now 6 weeks old.

Have a good month. See you in March the its Springtime.

Sue

Contacts for the magazine

Editor:	Sue Albrow	Tel 893837	hadstockmag@live.co.uk
Accounts:	Tim Boyden	Tel 892746	t.k.boyden@btinternet.com
Advertising and Distribution	Robin Betser	Tel. 891385	<a href="mailto:robin@waylands.org.uk">robin@waylands.org.uk</a>

THE COPY DEADLINE FOR MARCH 2021 MAGAZINE IS:-

SATURDAY 20 FEBRUARY 2021

Disclaimer:

The views expressed in this magazine are submitted by readers and are not necessarily the views of the Editor or the Hadstock Parochial Church Council (PCC), and they cannot accept responsibility for goods or services advertised in the magazine, although advertisements are accepted in good faith. The Editor reserves the right to edit or exclude letters and articles that are submitted for publication, and no liabilities are implied or accepted.

---

## Parish Church of St Botolph's

FEBRUARY 2021

Paula writes: Happy New Year!!



I don't need to ask about your wishes for 2021. You, like me, must long for an end to COVID; anxiety for ourselves and our loved ones; stringent restrictions; and long for spontaneity and joy to return to our lives. When? If only we knew....

But let's be positive!! Vaccinations are rolling out. The days are getting longer (even though it's snowing as I write). The first crocus is showing a hint of yellow in our garden, and a little clump of snowdrops is peeping through. We've even seen two very confused daisies. The world turns in its rhythm. Spring will come.

In the church's year, February marks the start of Lent – six weeks of penitence, facing ourselves and our weakness, before remembering Jesus dying on the Cross on Good Friday to bring the joy of Easter – his resurrection, and eternal new life which death cannot overcome. Many may feel, with some justification, that we've coped with quite enough sackcloth and ashes over these months already. But the word *Lent* means 'spring'. Think how a winter tree retreats into itself to guard its sap, holding on with tenacity and resilience, ready to burst to life when spring returns. We are building our tenacity and resilience too, as individuals and a community: facing life honestly and with self-awareness, supporting each other: holding to new insights discovered over lockdown about what really matters in life. As St Paul wrote to the first Christians in Philippi: *Whatever is true, whatever is honourable, whatever is just, whatever is pure, whatever is pleasing, whatever is commendable... think about these things. And the God of peace will be with you.*

I wonder how *you* are guarding your energy, your hope, during lockdown? Perhaps we are learning to take pleasure in little things. Perhaps it helps to build into the daily routine something to enjoy and look forward to: a run; a workout; some creative cooking; a new hobby... something to look back at bedtime and think 'That was fun!' Enthusiasm is infectious. So are smiles and laughter. Let's spread them as we support each other.

THANKS to so many in Hadstock: to Sue and Olly, for keeping this magazine such a colourful good read; all who distribute it; all of you who chat on your walks and check on your neighbours; all of you who have poured so much energy into the 1020-2020 planning. THANK YOU all for making this such a special village.

With my prayers and best wishes to you all – and please don't hesitate to get in touch if you would like a chat. Paula

## Services at St Botolph's

*At the time of writing, all services at St Botolph's are being held online only, as requested by the Diocese and Essex Public Health Directors. If restrictions are lifted allowing us to meet physically in church, details will be circulated on Hadstock Info.*

Sunday 7 February 9.30 am	Family Service – Sowing the Seed
Sunday 14 February 9.30 am	Holy Communion – Book of Common Prayer
Wednesday 17 February 7.30 pm	ASH WEDNESDAY – Holy Communion held jointly with the Revd Caroline Currer
Sunday 21 February 9.30am	Holy Communion – Common Worship
Sunday 28 February 9.30 am	Holy Communion – Common Worship
Sunday 7 March 9.30 am	Holy Communion – Book of Common Prayer
Sunday 14 March 9.30am	MOTHERING SUNDAY – Family Service

Tuesday Morning Prayer is led by Zoom from Paula's home each week at 8.30 am.

Sadly, the church is CLOSED at present because of COVID. It is open for private prayer and reflection by prior arrangement – please contact Janice Snell (tel. 01223 892338) who will be happy to arrange a mutually convenient time.

*If you would like to receive the weekly email Worship Bulletin with details of services and Zoom links, please contact Paula.*

---

Andrew Smith has sent in some more jokes to cheer us all up. (The first ones were this time last year I think) - Look out for them.

Here is the first.

**\*\*Overall, I'd say my career as a photographer has been a bit of a blurr.\*\***

---

## New Bishop and Team Rector

The Rev'd Jeremy Trew will become Team Rector and Area Dean of Saffron Walden on Wednesday 3<sup>rd</sup> March at 7.30pm at St Mary's Saffron Walden. The service will also be livestreamed. Jeremy is currently vicar of St Gregory's, Seaton and St Michael's, Beer in Devon and was until recently Rural Dean. He and his



wife, Alison, are moving to Saffron Walden in February. Jeremy started life in Environmental Engineering and after ordination served his curacy in Leeds and then was vicar of a group of parishes between Harrogate and York before moving to Devon. He has been ordained 23 years. He is married to Alison, who trained as a biochemist and currently works for a charity promoting science teaching in primary schools. Their daughters, Eleanor and Rachel, are both at university, studying Architecture and Business respectively.

The Right Reverend Dr Guli Francis-Dehqani will be the next Bishop of Chelmsford, succeeding the Most Reverend Stephen Cottrell, who became Archbishop of York in 2020. Bishop Guli is currently Bishop of Loughborough in the Diocese of Leicester. She was born in Iran. Her family left the country following the Iranian Revolution in 1980, when she was 13 years old, and to date she has been unable to return. She is married to Lee, also a priest, and they have three children. Bishop Guli said



“It is a great privilege to be appointed as the next Bishop of Chelmsford. I know there are many challenges ahead both in the church and wider society, not least as a result of the pandemic. However, I am hopeful about the future. As Christian communities, I believe our task is to be faithful; to share the good news of Jesus Christ and to continue serving the world; to work well together and in partnership with others. In doing this, we'll discover the extent of God's love.”

We look forward to their ministry with us and hold them in our prayers. *Paula*

---



1020 - 2020

## HADSTOCK 1020-2020: A THOUSAND YEARS IN THE LIFE OF A VILLAGE PLUS ONE!

THANK YOU for the huge amount of work and enthusiasm which is continuing to go into this project. With the Hadstock 2020 book printed, paintings produced, poetry competition and Quiz already achieved, Life Stories project in train, and much work by the Hadstock Society, we have already seen tangible results and enjoyment from celebrating the Millennium, despite the frustrations to our original plans.

The Millennium Group met on 17 January. It discussed in detail how we could provide a deliverable realistic programme which will be less vulnerable to the continuing uncertainties of the COVID pandemic. It agreed to ask The Lottery Heritage Fund to extend their grant until 30 June 2021, and to agree a shift of emphasis in the programme towards enhanced digital activities to enable an extensive and lasting legacy.

This still leaves us the option of holding some events live *should COVID restrictions be lifted*: these include walks, Historic Exhibition, Art Exhibition, poetry readings and craft demonstrations.

I hope that soon after this Magazine is printed, we will have the Lottery's response. Meanwhile, very positive discussions are being held with NextNorth about the design and structure of the enhanced website.

The Millennium Group meets again on 7 March, by which time it should be clearer whether there is a realistic prospect of holding the live events before the end of June. We'll keep you in touch! *Paula*

---



# Hadstock - News, - Events, - Happenings, Reports

## Elf Mail 2020

Once again, Hadstock has amazed us with its generosity and enthusiasm for Elf Mail. We delivered about 400 cards around the village and raised a record breaking £275. Wow! All the money has been donated to the Neonatal Intensive Care Unit at the Rosie Hospital and will be used to help sick and premature babies and their families.



We have been doing Elf Mail for 9 years now, and raised a staggering £1245! We thought you might enjoy a photo of the elves before and after!



2011



2020

Thank you all for your support and donations. See you next year!

The Hadstock Elves (Matt, Isabel, Dan and Harry)



**Don't miss your opportunity to buy special commemorative Hadstock St. Botolph's greetings cards.**

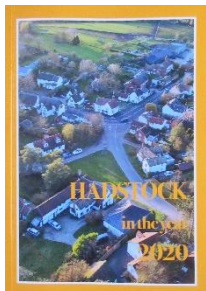
Artworks specially painted for our Millennium festival by 28 different local artists have been put together on A6 greetings cards.

They are available from Sonia at £6 per pack of 10 with envelopes, as Christmas cards or blank inside.

**£1 per pack sold goes to Friends of St. Botolph.**

[email soniavilliers@icloud.com](mailto:soniavilliers@icloud.com) to reserve yours, free delivery

## A Letter to the Editor.....



Dear Editor

What a mammoth task and achievement!

I would like to say thank you to Gill Butterworth, Sarah Lockton and Lynn Nuttall for compiling and publishing the 2020 Hadstock book.

We are so lucky to have you and your enthusiasm and determination for such an invaluable and fascinating record of our village.

Sonia & Nigel

*I'm sure that goes for everyone in the village. It is a wonderful book to have and has been put together with style and tenacity. We are lucky to have it. And thanks to Olly Plumridge for the great printing job. Well done all of you. Sue -Ed*



---

### Book Club latest

The 2 most recent books we discussed were 'Spies' by Michael Freyn and 'Nature Cure' by Richard Mabey. Both were very enjoyable and are recommended to you. The Christmas extravaganza party (on zoom of course) was great fun with a series of quiz questions and some virtual cocktails. Our next zoom event is the discussing of Stella's choice of 'Bitter Orange' by Clare Fuller on 22 February.



---

### Play Equipment on the Rec continues to be open to use

You will find wipes for cleaning touch points before and after use. We have also installed a hand sanitiser dispenser to help keep you safe.

The play equipment is there for your children to enjoy but please observe SOCIAL DISTANCING

rules at all times and use common sense to stay safe.

Please Have Fun!

Hadstock Parish Council

---

**\*\*Did I already do my déjà vu joke? \*\***





## HADSTOCK PARISH COUNCIL NEWS

The Parish Council has decided that its share of Council Tax for 2021/22 will be unchanged at £62.19 for a Band D property. This is the third year in a row there has been no increase. Our project to improve the

Recreation Ground continues despite the pandemic.

At the time of writing Uttlesford haven't confirmed the Green Skip service for next year but we are assuming this will continue as before and have included the cost in the parish precept.

A contractor has been appointed to fence the playground equipment, this should be completed during March, and Uttlesford have agreed to supply us with 8 fruit trees to start our heritage orchard in the far corner. The orchard and planting of wildflowers on the Recreation Ground will though have to wait until it is possible to ask a group of volunteers to work safely. Parish Clerk Sara has secured grants totalling £5500 which covers all but £200 of the cost.

Our District Councillor, James de Vries, will again offer a £500 grant for community projects next year. Email Sara with suggestions for this,

[hadstockparishcouncil@hotmail.co.uk](mailto:hadstockparishcouncil@hotmail.co.uk).

Flooding on Linton Road has been a problem whenever there has been heavy rain and the Parish Council is pursuing this with the landowner to try to get a resolution.

The previous District Council's draft Local Plan was rejected by the Inspector and the current Council is working on a new draft. This is in the First Consultation phase (Issues and Options) which is gathering views and opinions from the public. This is being released as a number of 'themes':-

Where You Live, Character and Heritage, Climate Change, Transport  
Leisure, Culture and Healthy Lifestyles, Biodiversity, Local Economy, Homes,  
Creating new places and communities.

A New Call for Sites has also been opened.

You can comment at [www.uttlesford.gov.uk/new-local-plan](http://www.uttlesford.gov.uk/new-local-plan) where you can also read the comments made by others across the District. Closing date is 21st April.

Rick Albrow

Parish Council Chairman.

---

**\*\*I used to dread walking under horse chestnut trees in the autumn.  
But after therapy, I've managed to conker it.\*\***

## HADSTOCK PARISH COUNCIL



Chairman:  
Cllr. Rick Albrow  
New Barn Close  
Bartlow Road  
Hadstock  
CB21 4PF

Clerk:  
Sara Beckett  
07841343413

To horse riders,

The Parish Council has recently received complaints about horses being ridden on public footpaths in the Parish. With the recent wet weather this has exacerbated the muddy state of these paths. Whilst I appreciate that there is a limited amount of bridleway in Hadstock, I have to remind you that it is your responsibility to know where you can legally ride your horse, stay on the bridleways and keep off the footpaths.

Bridleways in the parish of Hadstock are:

- B1052 south of FDL across the Common towards Burtonwood Farm (in the parish of Great Chesterford) (no. 28)
- Chalky Road towards Linton from the bend on Bartlow Road (no. 5)
- from B1052 south of Cambridgeshire boundary, along county boundary but only for a distance of 300m or so (no. 30)

Anything else is a footpath and not open to horses. This includes Len's Path from Cobblers Corner to Linton which is a permissive path leased by the Parish Council and open for walkers and cyclists only.

Thank you for your cooperation.

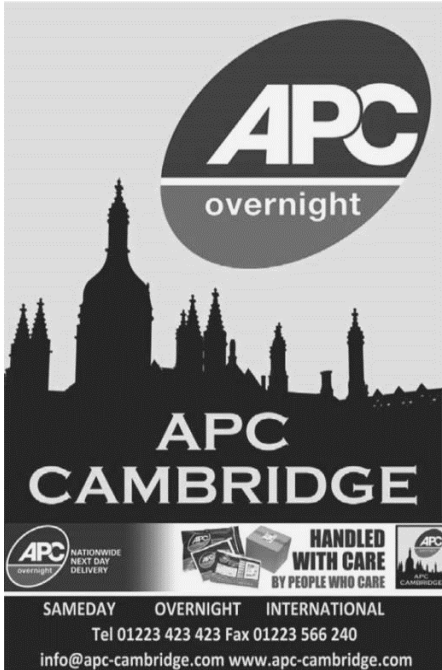
Rick Albrow.

Chairman Hadstock Parish Council

January 2021.

---

**\*\* When my wife asked me to stop impersonating a flamingo, I had to put my foot down. \*\***



**APC**  
overnight

**APC**  
**CAMBRIDGE**

APC overnight NATIONWIDE NEXT DAY DELIVERY **HANDLED WITH CARE** BY PEOPLE WHO CARE APC CAMBRIDGE

**SAMEDAY OVERNIGHT INTERNATIONAL**  
Tel 01223 423 423 Fax 01223 566 240  
info@apc-cambridge.com www.apc-cambridge.com

## **HADSTOCK VILLAGE HALL**

### **Available for Hire**

Suitable for many activities and events including \*Parties \*Committee meetings

\*Private events \*Lunches \*Receptions

=====

**Spacious enclosed garden with paved area - Suitable for BBQs \***

\*Large updated kitchen

\*Easily accessed parking

**For more information and to book**

**Please contact:** Maggie Hartley

[hadstockhallbookings20@gmail.com](mailto:hadstockhallbookings20@gmail.com)

01223 971089 or

Jude Hannam

[martinandjude@hannam.de](mailto:martinandjude@hannam.de)

01223 971583

Church Path, Bartlow Road, Hadstock  
CB21 4BH

## **ClearTax** & ACCOUNTING LTD

Quality, friendly accounting services and taxation advice.

Sole trader and small company specialist.

Free initial consultation

The Granary,  
Yews Farm Yard, Hadstock

t: 01223 894036  
e: [janine@cleartax.co.uk](mailto:janine@cleartax.co.uk)  
[www.cleartax.co.uk](http://www.cleartax.co.uk)

This magazine is  
printed by

***E & E PLUMRIDGE***

*Design & Print*

41 High Street  
Linton

Tel. 01223 891407

Thank You

## News from the Hadstock Society

The AGM of the Hadstock Society was held by video conference on Friday 27th November 2020. Following the formalities of approving the minutes of the previous meeting and hearing the Treasurer's report for the year ending 1st October 2020, Richard Dolby, Chair of the Hadstock Society, gave a very interesting and enjoyable Powerpoint presentation on the main activities and achievements of the past year. These included: -

- The good progress that had been made on adding content to the Hadstock Society pages on the new village website.
- Spreadsheet capture of data from Parish maps around 1805 has been completed as part of the Essex Place-names project. Analysis of this data has now started.
- A series of simplified maps of the Parish and village has been created to look at changes in landscape over the last 250 years and storylines are being developed.

These projects on Parish History will provide outputs suitable for archiving on the website.

The election of officers for the coming year then took place and Richard paid tribute and expressed warmest thanks to Hamish McIlwrack for his 40 years of dedicated service to the society, which included two terms as Chair. Hamish remains a committee member.

Project priorities for 2021 were discussed and these are to include: -

- Support for the Church 2020 Millennium project with a display of materials and artefacts alongside the Village Fete 2021.
- Support for planned increase in digital outputs for the Hadstock Millennium project.
- Analysis of place - name records of Parish and Village maps as a contribution to the Essex Place-names project.
- An exploratory project on house history and creation of an archive of documents and photographs related to specific buildings in the Parish.
- Improved and more online archiving of heritage information.

If you are new to the village (or maybe not so new!) and would like to find out more about the Hadstock Society and become a member then please contact the Secretary, Maggie Hartley at [hadstockociety21@gmail.com](mailto:hadstockociety21@gmail.com)

---

## Three Go for a Picnic....



This photo was sent in by Patsy Plumstead who said,  
'You may like to include this charming photo I took from my house today!!'

So here it is.  
Thanks Patsy!

(who just happens to live in the house behind the seat)

---

### HADSTOCK CORONAVIRUS HELP

Hello!

If you need any help then just call any of the people listed below.

Rick or Sue Albrow	01223 893837
Sara Porter	01223 890062
Katrina Gittins	01223 890457
Lynne Smith	01223 890750
Bev Dole	01223 897919
Sarah Lockton	01223 892987

Bartlow Road
Bilberry End, Orchard Pigtle
Linton Road
Moules Lane
Walden Road
Walden Road

Just ask: -shopping, prescriptions, dog walking, a chat, posting mail

---

## Hadstock 100 Club *'In It to Win It!'*

As previewed in the December/ January magazine, the Hadstock 100 Club Monthly Draw is restarting from April 1st. The Club raises vital funds for the continuing maintenance of our Village Hall, which has many ongoing costs, but has had no income from bookings, for almost a year, due to Covid.

For a year's subscription of £20, you have the chance, each month, to win £25. Plus there are four £75 prizes a year.

Some of you gave us your subscription, just before last year's 100 Club was cancelled in March:

If you would like your payment to be rolled over to this year, thank you. There is no need to do anything, as we know who has paid. If you have any questions at all, do get in touch.

Other regular members had not had their subscriptions collected, before it was cancelled:

We hope that you will want to renew your subscription? If so, it would be most helpful if you could get in touch with me, during February or early March to arrange your £20 payment. We are trying to avoid knocking on lots of doors and we do not have contact details for all of you. Thank you.

We also need NEW members! Do contact me if you would like to join.

We are hoping for payments to be made online, if possible, but all methods are available. To be in the Draw, subscriptions must be paid before the end of March.

Thank you for the support everyone. Good Luck!

Sarah Lockton [sarahlockton@gmail.com](mailto:sarahlockton@gmail.com)

Tel 892987      Text: 07553 884303



---

**\*\* I had to break it to my suitcase that we were not going on holiday this year because of Coronavirus.**

**Now I have to deal with the emotional baggage! \*\***

---



## The Vaccination Program

I have worked far more than usual since the first lockdown but having specialised as an intensive care baby nurse many years ago I haven't really looked after adults other than new mums for over 30 years. I am used to ventilated babies and over Easter I nearly offered to work on the frontline on adult Critical care but chickened out.

Since then I felt I wanted to do something more to help and when the opportunity to join the vaccination program arose I decided it was something I could definitely do. I hadn't realised that the program at Addenbrookes is somewhat of a military organisation and there were many pages of e-learning to cover and assessments to pass before I actually gave my first vaccine!

I am working at Addenbrookes giving the Pfizer vaccine and at present we are vaccinating all the health care workers including a huge additional area out to Peterborough etc.

The organisation is extraordinary! There are 11 vaccination booths vaccinating from 8am until 6pm and we aim for 650 vaccines a day! For those of you who have already had your vaccine you probably didn't realise how much happens before the 0.3ml of vaccine goes into your arm but it's pretty incredible to be part of the behind the scene action!

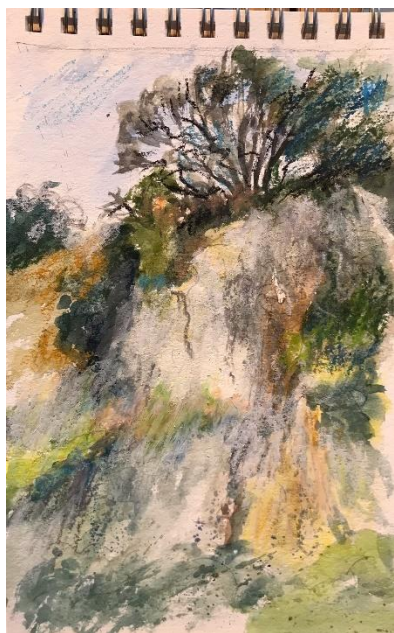
Before I did my training I had all the misinformation flying around my head but now we get the weekly updates directly from Pfizer I want to reassure everyone to not worry about the gap of 12 weeks rather than 3 between doses, whilst we all continue to socially distance, wash our hands, wear masks etc to get all the vulnerable even a bit less likely to become seriously ill with the virus is better than some having maximum immunity and others none.

Anyone offered the vaccine please have it. I've had mine. I had a slightly sore arm afterwards and I know it is as safe as any other vaccine most of us wouldn't think twice about having for the chance to go abroad...

Bev Doel

*Thanks Bev- It's good to get the inside story and thank you for helping with the vaccine rollout. Perhaps you can let us know how it's going later on? Sue – Ed*

A beautiful new painting by Sue Walker 'Early winter field margin, near Linton Zoo.'



and  
a sketch of the  
Chalk Quarry at the Grip, Linton

---

## HADSTOCK SOCIETY

The Hadstock Society has amassed a wonderful array of photos of Hadstock village, people and farming life over the last hundred years. The photos have been collected by Crocky who has done a wonderful job of creating a photographic history of our village. You can access many of these photos through the fantastic new Village Website [www.hadstock.org.uk](http://www.hadstock.org.uk) and clicking on Hadstock Society.

We would like to keep adding to this collection, and therefore I am asking if anyone has any old photos of Hadstock that we could borrow to digitise. The photo could be of buildings, people, village scenes, surrounding countryside or anything you think may be of interest.

I will take great care with any photos and make sure they are returned as quickly as possible.

If you have any pictures you would like added to the collection please contact me.

Many Thanks      Mel Abbiss

Tel: 07984 707011

Email: [melabbiss@gmail.com](mailto:melabbiss@gmail.com)



### An Unexpected Guest for Breakfast

This unusual photo of a buzzard was captured by Alan Wells

It was on the bird feeder one morning photographed from indoors.

[Thanks Alan.](#)

---

## A muddy walk to Hawes Hill



The third of Sue Walker's beautiful recent 'lockdown' paintings.  
[www.suewalkerart.co.uk](http://www.suewalkerart.co.uk)



## Logs of the Month

Photo sent in by  
Mrs Trellis of No 1  
New Barn Close  
Hadstock

Old Barn?



## The District Councillor's Report

### The Local Plan

UDC have now launched the citizen engagement portal for current and recent development plan consultations. I would strongly urge all residents to review the various documents and provide their thoughts and comments.

The consultation portal can be found here: <https://uttlesford-consult.objective.co.uk/kse>

### Planning appeal - Stansted Airport

The inquiry began at 10.00am on Tuesday 12 January 2021. You can stay up to date on the progress of the inquiry or view live streams via the links found on the UDC website

<http://uttlesford.gov.uk/airport-appeal>

### Covid-19 PCR testing

Following a change in government policy on community Covid-19 testing, we will shortly stop the supply of PCR testing kits from Turpin's Indoor Bowling Club, Saffron Walden and the Rowena Davey Centre, Great Dunmow.

These sites are for individuals to collect a test to do at home. People can also collect them for their immediate family and/or members of their support bubble

Tests will be available until Thursday 28 January, unless stocks run out sooner. The sites will remain open for people to return completed tests until Thursday 4 February. The government has confirmed it will not be supplying any more PCR tests to councils.

### Covid-19 support

There are still some support packages and systems in place for both residents and businesses who are struggling due to Covid-19.

Speak to the Council as soon as possible if you require any kind of assistance.

Online: [www.uttlesford.gov.uk](http://www.uttlesford.gov.uk)

Email: [uconnect@uttlesford.gov.uk](mailto:uconnect@uttlesford.gov.uk)

Phone: 01799 510510"

Regards

*James de Vries*



District Councillor - Uttlesford District Council

- Member for Ashdon Ward
- Lead Member for Oversight of Cyber Security
- Topic Lead for Digital Strategy
- Investment Board Member
- Governance, Audit and Performance Committee Member

## THE HUNDRED PARISHES SOCIETY

[www.hundredparishes.org.uk](http://www.hundredparishes.org.uk)

Our area has a good number of so-called “Hertfordshire puddingstones”. I am not convinced that Hertfordshire has any real justification for claiming the puddingstone because examples can be found on both sides of the Essex / Hertfordshire county boundary. I recently acquired a copy of “Puddingstone Walks in Essex”, a neat little book that describes walking routes which in total pass more than twenty puddingstones or groups of puddingstones in the Essex part of the Hundred Parishes.



A puddingstone is a conglomerate of many small, rounded and colourful pebbles that appear to have been cemented together. Geologists explain that they were formed around 50 million years ago and were deposited in this area by a retreating glacier, possibly only 10,000 years ago at the end of the last Ice Age.

Some puddingstones lay where they were deposited, whilst others have been moved to more convenient locations and sometimes put to good use. Brent Pelham and Arkesden have incorporated them into their war memorials. Others are visible in Arkesden in the stream of Wicken Water beside the bridge.

Stones have been used as building material within walls in Much Hadham and Wendens Ambo, in Great Hallingbury's church tower and in St Helen's Chapel at Wicken Bonhunt.

One in Standon is proudly displayed, whilst a large puddingstone in Newport seems to have been unceremoniously abandoned beside the approach road to the station. Others stand in Tilty churchyard, by the pump at Ugley Green, in Saffron Walden Museum's grounds, by the Shell House in Hatfield Forest and beside the Yew Tree pub



*Ugley Green by the pump*



*in Manuden.*

No doubt there are many more – I would be pleased to hear of any that I have missed – please email me at [hundredparishes@btinternet.com](mailto:hundredparishes@btinternet.com), if possible, with a photo. Will we find more in Hertfordshire or Essex?

Ken McDonald, Secretary.

*Wendens Ambo ancient wall  
with pudding stone*

Does anyone in Hadstock have one of these? *Sue Ed*



## EVENTS, ACTIVITIES and Fun

---

I'm sorry to say that there are not many events nor many activities at the moment but I'm sure they will start up again soon and fun is always possible'

Meanwhile here are some contact details of organisations in the village and around so you can plan for the future .....

---

**BIN COLLECTIONS** –      Weds 3<sup>rd</sup> and 17<sup>th</sup> February for Black and Brown bins  
   Weds 10<sup>th</sup> and 24<sup>th</sup> February for Green and Brown bins

Hopefully Saturday Green skip collections will start up in again April.

---

Hadstock Parish Council

Next meeting on zoom Thursday 25 February at 7.30pm.

details of how to join will be circulated on Hadstock Info or from the meeting agenda which is published on the Parish Council section of the village website which is:-

**[www.hadstock.org.uk](http://www.hadstock.org.uk)**

---

Hadstock Society

Secretary : Maggie Hartley at [hadstocksociety21@gmail.com](mailto:hadstocksociety21@gmail.com)

---

Hadstock Village Hall see p 11 of this magazine for how to hire when is again possible.

---

Hadstock Silver Band normally meets Tuesdays at the V. hall Contact: Lesley Jenkinson 07766 540926

---

Bell Ringing practice night at St Botolph's normally Thursdays. Contact: Gilbert Rowlandson 01223 892882 or Janice Snell 01223 892338

---

Bridge Club normally Weds at the V. hall contact: Lyn Faulkner on 01223 890815

---

Table Tennis 7.30 -9.00, normally meets at the V hall on 2<sup>nd</sup> and last Monday each month. Contact: Peter Jarritt 01223 897886

---

Linton Area Learning Alliance (LALA) Normally meets on Tuesday mornings in the Village hall in Linton. Autumn and Spring terms. Currently via zoom. Contact Sue Mudge 01223 892737

---

Linton and District Historical soc. Meets Tuesday evenings Linton Village hall. Contact Margaret Creek 01223 893915 or email: [ldscambs@pobroadband.co.uk](mailto:ldscambs@pobroadband.co.uk) for details

---

Email info@angliarhearing.co.uk

**AN INDEPENDENT AUDIOLOGY CLINIC  
BASED IN CAMBRIDGE**

**Hearing Tests**  
Free Hearing Tests  
Detailed Hearing Assessments  
Most Up-To-Date Testing Methods

**Ear Wax Removal**  
Micro-suction • Irrigation • Video Otoscope

**Hearing Aids**  
Get a hearing aid in a matter of days  
Free 30-day no-obligation trial

**Tinnitus Treatment**  
Fast appointments. Many treatment options  
Member of British Tinnitus Assoc.



**angli-EAR**  
Hearing & Tinnitus Solutions

*Paddy McKeown*



**WALDEN  
Sweeps**

- ◆ Services offered include:
- ◆ Chimney and Flue Sweeping
- ◆ Wood Burning Stoves
- ◆ Open Fires
- ◆ Aga/Rayburn
- ◆ Bird Nest Removal
- ◆ CCTV Examinations

t: 01799 599981  
m: 07956 099788  
e: paddy@waldensweeps.myzen.co.uk

**WWW.WALDENCHIMNEYSWEEPS.CO.UK**



### Kemi Badenoch MP

holds regular advice surgeries offering help and support for local residents.

If you would like to contact Kemi, you can email

[kemi.badenoch.mp@parliament.uk](mailto:kemi.badenoch.mp@parliament.uk)

or call 0207 219 1943

Hadstock's Local District Councillor - Ashdon Ward:

Councillor James De Vries Party : Residents for Uttlesford

email: [cllrdevries@uttlesford.gov.uk](mailto:cllrdevries@uttlesford.gov.uk) or write to c/o Uttlesford District Council  
London Road, Saffron Walden, Essex CB11 4ER

**\*\* A friend said to me, 'You're a solicitor. Will you help me with my Will?' I replied, "Of course, leave everything to me" \*\***

# CENSUS 2021

A census has taken place in England every ten years since 1801 (with the exception of 1941). A census gathers information about our society so that appropriate services can be put in place for everyone to enjoy now and in the future.

Fans of TV programmes such as 'Who Do You Think You Are' will know the value of historic census data to family historians and genealogists, but data from the census impacts our lives every day, often without us even realising it.

Did you know that water companies use census data to anticipate peak water demand? Or that the NHS uses census data to plan a wide range of services such as hospitals and GP surgeries, mobile chiropodists and home support? Everything from schools to care home places are planned using census data to make sure that the needs of all age groups are met.

Every aspect of our lives is impacted by the census, so it is vital that everyone participates to ensure the best possible understanding of the structure and needs of our society.

By taking part, you can make sure that your community is represented and gets its share of public and other funding to ensure the provision of services now and in the future.

The next official census date is Sunday 21 March 2021, but Census 2021 will be the first time that everyone will be able to complete the census online at any time from the beginning of March 2021

You will receive a letter with your unique access code and will be able to complete the census online using any device.

Help will be available if you need it by phone, email or text. You will also be able to use web-chat or social media, or drop into a Covid-compliant Census Support

Centre. **Find out more at [www.census.gov.uk](http://www.census.gov.uk)**

## Uttlesford Food Bank.



If you go to their website at

<https://uttlesford.foodbank.org.uk/give-help/virtual-food-basket/>you can donate a virtual food basket in small, medium

or family sizes. You can also make an online donation - cash is always welcome because they can use it to fill any gaps in their stock.

If you're out shopping for your own essentials, there are donation points in Waitrose and Tescos in Saffron Walden.

Also the Foodbank warehouse, at Shire Hill Saffron Walden, is open 7 days a week from 9.00. Please leave donations in the crate in the Corridor

**AS I WRITE THIS IN JANUARY THE FOOD BANK IS WELL STOCKED WITH FOOD ITEMS BUT IS WANTING DONATIONS OF: -**

**CHILDREN'S SHAMPOO AND SOAP.**

**CHILDREN'S TOOTHBRUSHES AND TOOTHPASTE**

In Hadstock Lynn Smith is collecting items for the Food Bank, if you can help leave items in the box on her drive at -4 Moules Lane.

