

Hadstock Magazine



APRIL 2020

£7.00 for 11 issues

**Happy
Easter**

Beginnings – Editors Page

Dear Readers,

What a difference a month makes. Who would have believed that our happy normal lives would have changed so much in such a short number of days?

I hope you are all well and stay well and are coping with the restrictions to our lives.

We all seem to be in agreement with it. and if we can continue with it for as long as needed then we can help our health service cope with fewer sick people and save more lives.

Thank you to those we know in the village who work in the health service, or are carers, and to those in the police fire and ambulance services and armed forces.

Also very important to us are the postmen, milk deliverers grocery deliverers and our new veg box delivery man, that are keeping us going. Thank you.

And from me a big thank you to Olly Plumridge for printing this magazine which might be the last he will be printing for a while.

If you send in any news, info, ideas of what to do while our lives are restricted for April's deadline then we will produce a magazine which can be put on the new website at least, which is now live www.hadstock.org.uk (have a look if you can)

Hopefully it will not be too long before the mag will be in print again.

Until then, take care , stay at home if you can and keep washing those hands!

Stay well and best wishes

Sue

Contacts for the magazine

Editor:	Sue Albrow	Tel 893837	hadstockmag@live.co.uk
Accounts:	Tim Boyden	Tel 892746	t.k.boyden@btinternet.com
Advertising and Distribution	Robin Betser	Tel. 891385	robin@waylands.org.uk

THE COPY DEADLINE FOR MAY 2020 MAGAZINE IS:-

MONDAY 20 APRIL 2020

Disclaimer:

The views expressed in this magazine are submitted by readers and are not necessarily the views of the Editor or the Hadstock Parochial Church Council (PCC), and they cannot accept responsibility for goods or services advertised in the magazine, although advertisements are accepted in good faith. The Editor reserves the right to edit or exclude letters and articles that are submitted for publication, and no liabilities are implied or accepted.



Parish Church of St Botolph's

APRIL 2020



Paula writes: Do you know the true story about the village of Eyam, in Derbyshire, which had an outbreak of the Plague in 1665 - brought in (it's thought) through a parcel full of dress patterns. The vicar realised that this could quickly spread to decimate the area, and persuaded the villagers to go into lockdown. No one could leave or enter. Food was brought from outside and left on a stone by the boundary, with payment left in an indentation in the stone filled with vinegar. People gritted their teeth: and pulled together. Their costly sacrifice stopped the plague spreading more widely throughout the countryside.

That story may feel very real in the new world of COVID-19. Normal life already seems a long time ago. We are constantly needing to re-adjust our behaviour. Frustratingly, I'm locked down 8 miles away – thank heaven for the phone and internet to keep in touch! Please do ring if you want to talk through any concerns, or prayer for yourself or your loved ones, or just a friendly chat!

Perhaps it helps if we all see social distancing and self-isolation not as restrictions on our freedom but as **positive** ways for us all to protect each other: we can beat the virus best by **all** pulling together and respecting the isolation rules, however tempting it may be to make just one more trip into town. Hadstock will, I know and trust, rally round to help friends and neighbours, so do continue to check that those around you are OK and have all they need. While we can't hug or even shake hands, a smile through the window, a friendly voice will do so much to keep us upbeat. And hold on to the beauty of spring, the joy of creation.

As you know, we have to suspend church services. This is very sad at this special time of Easter, though I am trying to provide ways to share in worship at home. But I am glad that the PCC was ready to try and keep the church open for private prayer, as encouraged by the central Church. This has now been made impossible by the latest advice from the Church of England and the Diocese of Chelmsford. **(See next page)**

St Botolph's has weathered umpteen crises in its 1000 years – famines; fighting; the Interdict of 1208-1213, when the Pope banned all services throughout England; the Black Death; flu in 1918, and two World Wars. It will stand through COVI-19 too. Even if we need to review our plans to celebrate that Millennium, St Botolph's has witnessed here to the God who loves us; and his Son Jesus who bore all our suffering, was crucified but conquered death and rose again. At this Easter time, trust in the knowledge that nothing can separate us from his love.

May you and all you love be kept safe from harm and strong in body and mind.

With my prayers and best wishes to you all *Paula*



ST BOTOLPH'S CHURCH, HADSTOCK

COVID-19

We greatly regret that because of the Coronavirus outbreak, and following advice from the Church of England and the Diocese of Chelmsford, - all public worship in St Botolph's is suspended until further notice.

Sadly, it is also closed to visitors and closed even for private prayer and meditation.

Please trust that God is with us even in these exceptionally challenging circumstances.

Two prayers you may find helpful at this time:

Support us all, dear Lord, with your mercy. Sustain the anxious; be with the sick and all who care for them; give your strength to those who mourn. Help us to trust that nothing can separate us from your care: and give us the wisdom and the determination to love and support our neighbours as you love us, in the name of Jesus Christ our Lord. Amen.

God of compassion, be close to those who are ill, afraid or in isolation. In their loneliness, be their consolation; in their anxiety, be their hope; in their darkness, be their light; through him who suffered alone on the cross, but reigns with you in glory, Jesus Christ our Lord. Amen.

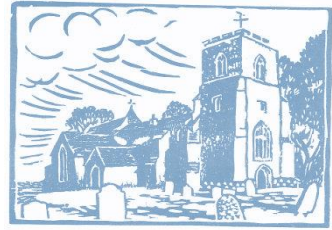
Further prayers, and an online service, can be found on the Church of England website (www.churchofengland.com) and the website of St Mary's Saffron Walden (www.stmaryssaffronwalden.org).

If you would like to talk to someone from the church, please ring: The Reverend Paula Griffiths, Priest at Hadstock, 01799 599141

Hadstock PCC, March 2020

ST BOTOLPH'S CHURCH

St Botolph's, a Church of England Church within the Diocese of Chelmsford, forms part of the Saffron Walden and Villages Team Ministry. It has stood as a place of worship for nearly 1000 years.



Priest at St Botolph's:

Revd. Paula Griffiths. Tel: 01799 599141
or email: paula.greatford@btinternet.com

Parish Office:

Tel: 01799 506024
or email: office@stmaryssaffronwalden.org

PCC:

Members:

Tim Boyden
Janey Devlin
Ann Seward
Janice Snell

Patricia Croxton-Smith
Peter Jarritt
Malcolm Seward

Secretary:

Moire Jarritt

Fabric Officer:

Rick Albrow

SUNDAY SERVICES - in normal times

You are very welcome at any of our services and may particularly enjoy those highlighted elsewhere in the Magazine.

Sunday services normally take place at 9.30am.

The standard pattern is:

1 st Sunday	Family Service (see separate notice for more details)
2 nd Sunday	Holy Communion (said) using the 1662 Book of Common Prayer
3 rd and 4 th Sundays	Holy Communion (Common Worship) with hymns

There are no services on 5th Sundays.

MORNING PRAYER – TUESDAYS again in normal times

Morning Prayer is a said service held at **8.30 a.m. on Tuesdays**. The service lasts about 20 minutes and is followed by refreshments and time to chat.

HOLY WEEK AND EASTER

We can't meet to celebrate these important moments together, but do think of them:



SUNDAY 5 APRIL: PALM SUNDAY

Jesus entered Jerusalem on a donkey. The crowds cheered and waved palm branches. 'Hosanna to the King!' We usually give out Palm crosses in the services. If you have one stored at home, bring it out and remember this dramatic day.

THURSDAY 9 APRIL: MAUNDY THURSDAY

The Last Supper: Jesus shared bread and wine with his disciples, and began that sharing of himself which Christians celebrate as the Holy Communion, feeling his presence in a very special way.

This is my body, which is given for you. This is my blood which is shed for you. Do this in remembrance of me.'



FRIDAY 10 APRIL: GOOD FRIDAY

Jesus is crucified -and dies taking all our sinfulness upon himself.

*There is a green hill far away
Without a city wall
Where the dear Lord was crucified
Who died to save us all*

SUNDAY 12 APRIL: EASTER DAY

The Resurrection – the promise of new eternal life is offered to us all as Jesus rises from the tomb. Traditionally we share Easter Eggs to celebrate that new life. Whatever stresses we face, hold on to that Easter promise:

Christ is risen! Death itself is conquered!

Please get in touch if you would like to talk about what Easter means to us now.



ANNUAL PAROCHIAL CHURCH MEETING- **CANCELLED** And REVISION OF CHURCH ELECTORAL ROLL

The Church's Electoral Roll has now been revised.

However, the Annual Meeting of Parishioners and Annual Parochial Church Meeting (APCM), has been postponed indefinitely.

These meetings are held for the election of churchwardens and PCC members and for the annual reports on the work of the church, and were due to be held SUNDAY 29 MARCH.

The PCC has prepared its Annual Report which is being sent to members of the Electoral Roll: if you would like a copy, please contact Paula or Moire.

BUILDING WORKS UPDATE

The builders have now finished their work outside, including replacing the coping stones on the south transept roof which were in poor condition and probably the cause of the damp and damaged plaster inside. The cast iron gutter and downpipe on the south side have been replaced with powder coated aluminium. This has greater capacity to prevent over-topping and will be low maintenance. It would be good to replace the rest of the rainwater system when funds allow. Repairs and re-decorating in south transept, tower and north porch are almost complete. New lights have also been installed in the south transept and the tower. All being well, the builders will return in a few weeks' time to complete the inside lime washing. All is looking very good. Sorry that you have to wait to see it.

Thanks again to the Friends of St Botolph's and all who have helped in any way. As ever, do speak to either of us if you want to know more.

Rick and Paula

Andrew Smith sent us in a few jokes to make us smile - suitable for all.

Look out for them in the Mag. Here is the first one...

I think the inventor of 'knock knock' jokes should be awarded the no bell prize.

Hadstock - News, - Events, - Happenings, - Reports



HADSTOCK QUIZ 2020.

A huge thank you to everyone who came to support the Quiz Night.

Congratulations to the winning team Antibac.

The evening made a profit of **£509** which will be used towards the upkeep of the Village Hall

The Raffle raised **£250** for Muscular Dystrophy Action Duchenne.

Our quizmaster Robin is already working on questions for next year!

AND

Many thanks to all who contributed to the Raffle at the Quiz - I have sent a cheque for £250 to Muscular Dystrophy specifically for research into Duchenne Muscular Dystrophy in the hope that they will discover something to help all the boys with Duchenne.

Janey Devlin

Hadstock Village Hall 100 Club



The March winners

No.34 Marilyn Davey £25.00

No. 46 Derek Bushell £25.00

Thank you to everyone who buys a 100 Club ticket – The money helps us run the Village Hall for us all to use and enjoy

I've written a script for a low-budget version of 'The Tempest'. It's just a draught at the moment.

PANCAKE PARTY!



Flippin Pancakes

We had a lovely time in the Village Hall on 23 February (the Sunday before Shrove Tuesday) where all ages raced, tossed and enjoyed a pile of pancakes. Special thanks to Katrina and Jude for cooking without ceasing and to everyone who came and helped in any way.

You can see what fun was had! *Paula*



Eatin Pancakes - Yummmm



Racin Pancakes

I'm not a fan of the new pound coin, but then again, I hate all change.

St Botolph's Hadstock

Together with the PCC, around 50 volunteers help to run the church, keep it clean, provide and arrange flowers, take part in services, prepare rotas, play the organ, refreshments at services, ring the bells, look after the grounds and the many other activities that help to keep our wonderful village Church alive. The Friends of St Botolph also support the Church. A list of group coordinators is on the Village Noticeboard, and also on the website and in the church porch.

If you would like to help in any way, please contact Revd. Paula Griffiths.

Please also contact Paula if you would like a visit at home, or to discuss baptism, wedding and funeral arrangements. The Parish Office can also help with baptism and wedding enquiries. (see next page)

Hire it?

The church can be hired for concerts: please contact Peter Jarritt

(peter.jarritt@btinternet.com) - [Sorry this is not possible at the moment](#)

Book Club



Unfortunately there are no reviews of the last 2 books I will locate them and publish them when next possible.

Sorry not to have them for you.

The books were The Silent Patient by Alex Michaelides

And then the most recent The Ministry of Utmost Happiness by Arundhati Roy

Interestingly the book group discussed the last book using a What's App group.

We will be using this again to discuss the next book which is :-

Before the coffee gets cold by Toshikazu Kawaguchi on 20 April if we are not allowed to meet in person by then.

Remember to use ...

[Hadstock Info](#) email information updates, is now be run by Isabel Fish.

To join send your email to

hadstockinfo@gmail.com – or to send your information, events, around those on the system.



Parish Council News

The last Parish Council was held on 5th March, seems a world away now. There will be no further meetings until we are advised otherwise. We have been advised that we can hold virtual meetings by electronic means to transact essential business such as pay bills, respond to planning applications, meet our statutory obligations etc. Otherwise all Parish Council activity is on hold. **Unsurprisingly the**

Annual Parish Meeting set for 16 April is postponed.

Sara, the Parish Clerk, will continue to send updates and notices received from the County and District Councils to Hadstock Info for circulation.

The play equipment on the Recreation Ground is CLOSED until further notice. Please do not allow children to use or touch it.

The Recreation Ground itself remains open for exercise and dog walking but please obey the rules for social distancing.

The Green Skip service is suspended but normal refuse collection continues although could be disrupted.

Before lockdown we had continued with our plans for the Recreation Ground – fencing the play equipment, replacing seats and a ‘wilding’ area. Let’s hope we are able to do this work later in the year. The good news is that we have received £500 grants towards the cost of this project from both the District Councillor’s Ward Fund and Stansted Airport Community Fund. This will be held in reserves until we are able to continue.
Rick.



Don’t forget to use the dog poop bag dispenser on the Recreation Ground and the red bin next to it- to put it in. Help keep the Play area clean for all our children and grandchildren to use. **Thank you**



Photo above.

Luckily it was collected by Uttlesford District Council by arrangement.

Thank you all. – See you next Year.

Sue – Ed

Annual Litter Pick

This year's litter pick was on

SUNDAY MARCH 15th.

11 Villagers met on the Green at

11.00. Equipment, bags and hi-vis

vests were provided and they left as

Litter Pickers in all directions from

the green, returning with their haul,

this year including a wheel barrow!

Hadstock Village Hall 100 Club

Raising money for the upkeep of our

Village Hall

£20 per year.

Two prizes of £25 each month

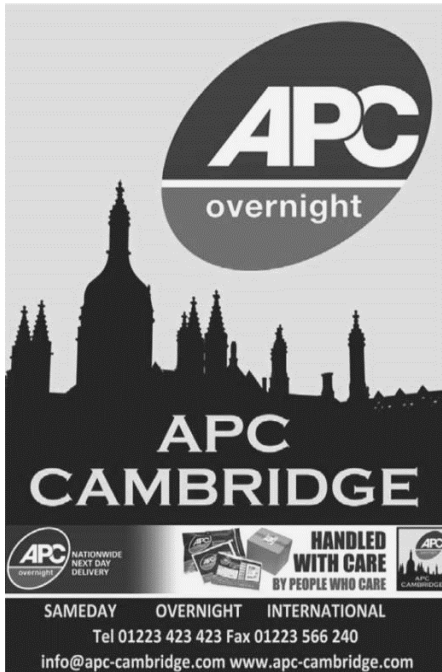
Plus

Two further prizes of £75 in June and December.

Currently available: 0, 37, 42, 73, 87, 88, 89

To purchase your new lucky number please contact:-

barbarabye@hotmail.com



APC
overnight

APC
CAMBRIDGE

APC NATIONWIDE
NEXT DAY
DELIVERY

**HANDLED
WITH CARE**
BY PEOPLE WHO CARE

APC CAMBRIDGE

SAMEDAY OVERNIGHT INTERNATIONAL
Tel 01223 423 423 Fax 01223 566 240
info@apc-cambridge.com www.apc-cambridge.com

HADSTOCK VILLAGE HALL

Available For Hire

Suitable for many activities and events including:

- Parties • Committee meetings
- Private events • Lunches and more...
- Spacious enclosed garden with paved area suitable for BBQs • Large updated kitchen
- Easily accessed parking

For more information and to book,
please contact:

Lynn Nuttall on 01223 893355
lynn50@hotmail.com

Hadstock Village Hall, Church Path,
Bartlow Road, CAMBS, CB21 4PH

ClearTax & ACCOUNTING LTD

Quality, friendly accounting
services and taxation advice.

Sole trader and small
company specialist.

Free initial consultation

The Granary,
Yews Farm Yard, Hadstock

t: 01223 894036
e: janine@cleartax.co.uk
www.cleartax.co.uk

This magazine is
printed by

E & E PLUMRIDGE

Design & Print

41 High Street
Linton

Tel. 01223 891407
Thank You

Hadstock 1020 to 2020

Still Keep the dates free

St Botolph's Millennium

One thousand years in the Life of a Village

Although over the past month many of you have made good progress with the plans for events, Coronavirus may have an impact on the Programme and we will have to take things step by step and review as we go along. Keep positive, but we will cancel the meeting on 5 April. Watch out for further updates.

Possible dates so far, for you to note are: -

- | | |
|-------------------------------------|--|
| Sunday 17 May | Rogation Sunday - walk around the Parish
Boundaries - more details later in mag |
| Sunday 24 May | Team Service for Saffron Walden and Villages
Team Ministry. <u>Now Cancelled</u> |
| Saturday 20 June | Hadstock Fete <u>Now Cancelled</u> |
| Sunday 5 July | Area Confirmation with Bishop Roger, Bishop of Colchester in St Botolph's |
| Saturday/Sunday
5/6 September | Flower Festival with Art Exhibition and Poetry Readings in St Botolph's.
Village Party on Sat 5 th |
| Saturday/ Sunday
12/13 September | Historical Exhibition by Hadstock Society and Saffron Walden Museum in St Botolph's. |
| Sunday 18 October | at 3.00pm The Millennium Service, with Rt Revd Martin Seeley, Bishop of St Edmundsbury and Ipswich. |

These are just the dates and events planned. Many more events, activities, booklets, walks, talks and concerts are still being planned and prepared– a whole summers worth.

Please contact Paula if you would like to take part, help or have any ideas you would like to discuss.

Due to the unwelcome intrusion of 'the virus' into our lives - the next meeting of the Millennium Planning Group due to be on Sunday 5th April at in St Botolph's has been Cancelled

More details next months.

Hadstock Fete 2020 – Sorry it's now cancelled

By the time you read this, the village bush telegraph will have been working overtime so most of you will know about it.

All of us who work together as the coordinating group for the Fete and have been doing so since the beginning of the year, had reluctantly come to the decision-before the pretty much, as I write, full shut down of social gatherings.-that we would be unable to move forward with the planning and execution of this year's Fete. **It is now cancelled**

This is not only the main community event in Hadstock but also a significant source of funding to both the Church building and the Village Hall. Those who guide those two beacons of village life and juggle the funding of the never-ending outlay to hold together the upkeep of the fabric in both buildings will miss the funds from the Fete.

Our overall concern in reaching this decision is the safety of all in the village particularly those in the high-risk categories. Yes, we have already laid out monies in advance as part of our forward planning and I shall seek deferment of those costs, if I can, to when we next hold the Fete. In any case, we always have held back a financial cushion as shown in the Fete accounts, so we are covered.

Our thanks to all who had already committed to help in some form by manning stalls, working on the day, providing auction lots, etc.

At this time, we cannot say when we shall be up and running again but we shall try at a future prudent time to launch something for the village to support and raise some funds and possibly at the same time a glass also.

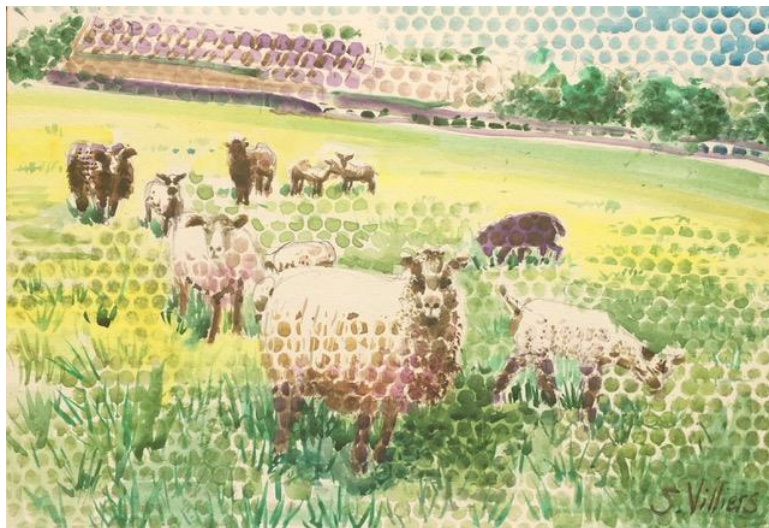
PS. We also hold a large number of draw tickets to sell at that time. You have been warned - you have not avoided the Village Tax, just deferred it! **Tim**

Mel Abbiss, James Beaumont, Karen Beaumont, Tim Boyden, Toby Chandler, Sarah Lockton, Lynn Nuttall. (Fete coordinators)

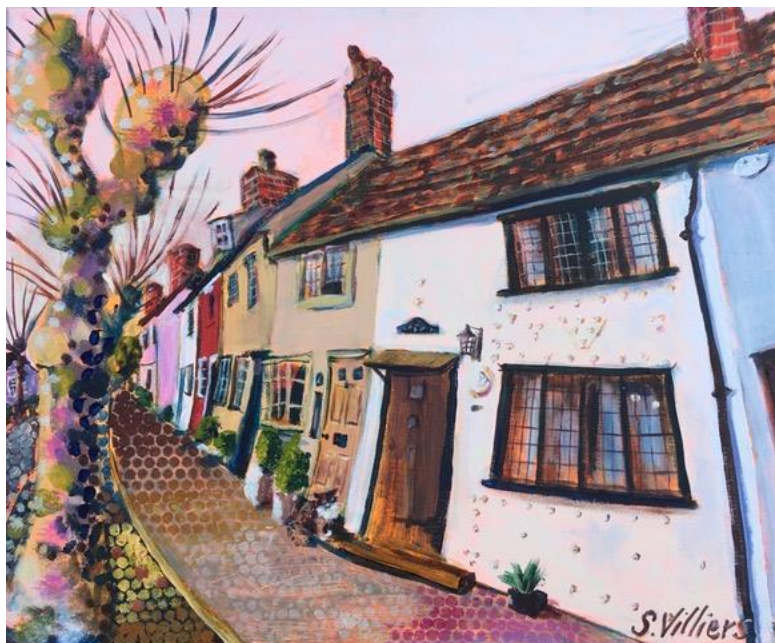
<https://www.facebook.com/hadstockvillagefete>

/

To cheer us up 2 paintings This one 'Hadstock Flock' by Sonia Villiers
A4 watercolour of Lou's sheep at Mallyons



'Castle
Street Cat'
– A3 acrylic
on canvas
also by
Sonia



MORE EVENTS, Activities and Fun

Bin Collections – Weds 8th and 22th April for **Black** and Brown bins

Weds 1st, 15th 29th April for **Green** and Brown bins

Green Skip - we have had one collection but it is now **suspended until further notice**

Most of the other events we usually advertise are cancelled postponed or generally off. We will let you know when normal service is resumed.

Dear Hadstock Residents and Village Hall Users

Unfortunately, in these uncertain times it has become necessary to close the hall for the foreseeable future.

Hadstock Village Hall is a fantastic social hub for the village and we will be up and running again just as soon as we are able.

Thank you all for your support.

Best Wishes

Hadstock Village Hall Committee

And just in case we can by then...

HADSTOCK VILLAGE HALL AGM

in the VILAGE HALL ON MONDAY 18 MAY

Refreshments available. All welcome.

We will let you know...

Jill O'Dwyer of Beam Ends on Church Path says

'Have put up a wee library outside my house, for anyone to help themselves, or swap books, also some toys and colouring books for kids ... in these strange times... please feel free to take anything or exchange, or whatever... Keep safe one and all.'

What a good idea – Thanks Jill

Officer : "I'm arresting you for downloading the entire Wikipedia"

Man: "No, wait! I can explain everything!"



Uttlesford Food Bank at Saffron Walden – You can donate to the food bank at Waitrose, Tescos, Baptist Church, and the library in Saffron Walden

Items such as: tinned potatoes, long life juice and milk, orange squash, Tinned puddings and fruit, cakes, chocs and sweets, tinned salmon /sardines, custard, rice pudding,, tinned ham, tinned or packeted ready meals eg chilli con carne, chicken in sauce, , gravy, Coffee, Jam, crackers for cheese, breakfast cereals.

The Uttlesford Foodbank is based in Stansted House, Shirehill, Saffron Walden

See <https://uttlesford.foodbank.org.uk/>

or Uttlesford foodbank page on facebook for more details

Please continue to support the food banks during the Covid emergency

BOOK ONLINE!

Email info@angliarhearing.co.uk

**AN INDEPENDENT AUDIOLOGY CLINIC
BASED IN CAMBRIDGE**

Hearing Tests
Free Hearing Tests
Detailed Hearing Assessments
Most Up-To-Date Testing Methods

Ear Wax Removal
Micro-suction • Irrigation • Video Otoscope

Hearing Aids
Get a hearing aid in a matter of days
Free 30-day no-obligation trial


Tinnitus Treatment
Fast appointments. Many treatment options
Member of British Tinnitus Assoc.



www.angliarhearing.co.uk

Phone 01223 661399

Paddy McKeown



**WALDEN
Sweeps**

- ◆ Services offered include:
- ◆ Chimney and Flue Sweeping
- ◆ Wood Burning Stoves
- ◆ Open Fires
- ◆ Aga/Rayburn
- ◆ Bird Nest Removal
- ◆ CCTV Examinations

t: 01799 599981
m: 07956 099788
e: paddy@waldensweeps.myzen.co.uk

WWW.WALDENCHIMNEYSWEEPS.CO.UK

Poetry Competition – Still happening

The theme is linked to the church's ancient door

Doors can often be seen as an opening into a different world, a move from one era to another, passing from the present to the future or the present to the past. They can be a symbol of a barrier that may need to be overcome- '*one door closes another opens.*'

For younger poets it might be helpful to have an opening line or two for each verse

e.g. *Go on open the door. Don't be afraid*

You might see/hear/feel/smell/touch/taste....

It's your imagination that counts! Poetry does not have to rhyme and does not even need capital letters. It's up to you!

All entries welcome and many thanks to those who have agreed to be on the judging panel.

There will be three prizes awarded: - Age 5- 11, 11-18 and 18 and over

Maggie

[All entries to be sent to hartleym006@gmail.com](mailto:hartleym006@gmail.com)

Rogation Walk – still planned to be on 17 May

If it is able to take place please note that the walk is almost 12 km (8 miles) so participants need to be reasonably fit and active, and the leaders will practice social distancing within the group who would all be asked to bring their own refreshments.



Door of the Month

Well it had to be this one this time.

The door to St Botolph's church, when it was allowed to be opened

It is believed to be the oldest working door in the country.

Lets hope it won't be long before it is allowed to be open and work again.

Don't forget to send in your doors of the month. You may not be able to go out through them yet but search

your photographs and pics - can you find any to send in to the mag for next time. hadstockmag @live.co.uk

HADSTOCK IN THE YEAR 2020



Ready, steady, go

We're ready for photos now: one of your house, and one of your 'household'

1. **HOW:** do you want to take your own photos or have them taken for you?
2. **WHEN:** choose a day with **good light**
3. **WHO:** gather your 'household', who do you want to be in the photo? Family pets?
4. **IF YOU ARE TAKING YOUR OWN:**
 - **image resolution** - using a smartphone is fine, but we need at least 300dpi (dots/pixels per inch) for a good quality print
 - **house photo** – act like an estate agent, get the best overall view
 - **'household' photo** – act natural, take a relaxed photo of you/your group standing outside your house
 - **send** your photos to one of us (emails below), with a short note on who lives in the house and the year you moved in ('here since xxxx'). Attach the largest size of photo you can, in .TIFF or .JPEG format.
5. **IF YOU WANT US TO TAKE THEM** – contact one of us to arrange a suitable date and time. (this may not be soon due to the virus restrictions0

Please follow the latest Coronavirus guidance on appropriate social distancing etc

Sarah Lockton – sarahlockton@gmail.com or 01223 892987

Gill Butterworth – gillbee@hotmail.com

Lynn Nuttall – lynnn50@hotmail.com or 01223 893355

THE HUNDRED PARISHES SOCIETY

www.hundredparishes.org.uk



One of the delights of a woodland walk on a sunny April day is the sweet scent wafting from the massed flowers of the English bluebell. One of our best-loved wildflowers, with half of the world's population found in the UK, it is typically associated with ancient woodlands but can also occur at the base of long-established hedgerows.



The narrow glossy leaves and flower spikes are produced from deeply rooted bulbs supported by specialised symbiotic fungi. The flowers are a deep violet-blue, but sometimes white or pink spikes occur.

The flowers are narrow, tubular-bell shaped, with tips that curl backwards, and the pollen is cream-coloured. They are arranged on one side of a drooping stem. After pollination by honeybees and other insects many green capsules form which will hold large numbers of ripe black seeds. The seeds are shaken from the capsules by breezes or by animals running through the woods.

The introduced and invasive Spanish bluebell has broader leaves. Its pale blue, unscented flowers are arranged all around the upright stem and are more open revealing blue pollen. Encouragingly, recent research has found that the native species has a genetic advantage due to the sheer weight of numbers and greater fertility and so should continue to thrive.



Howe Wood in Littlebury

Continued

The Hundred Parishes Society continued



Much Haddam

Locations where it is possible to see carpets of bluebells include the Hertfordshire Way as it passes through Sidehill Wood and Mill Wood in Much Hadham and Howe Wood in Littlebury beside Strethall Road as it crosses over the M11 motorway.

Several walks described on our website pass through woodlands. Walk number 4 goes through a fine bluebell wood at Rickling whilst the longer walk 20 visits Mill Wood. Details of woods or nature reserves to visit can be found on these websites: www.Uttlesford-Wildlife.org.uk and www.hertswildlifetrust.org.uk.

Tricia Moxey, Trustee.

Bluebells Rickling



Apparently, following the Annual General Meeting, there's been an appointment of a new senior director of the Old McDonald farm. He now the CIEIO

Better Times Ahead – sometime soon



The Fete back
Pub night back
Seeing friends
Going Out

Butterflies of the
month



Coffee and cakes



Church open, Bridge and the Band and yoga and
Art and Bell ringing and table tennis and history
and all - Again.....soon!

HADSTOCK CORONAVIRUS HELP

Hello! If you need any help then just call any of the people listed below.

Rick Albrow Sue Albrow	01223 893837	Bartlow Road
Sara Porter	01223 890062	Bilberry End, Orchard Pightle
Katrina Gittins	01223 890457	Linton Road
Lynne Smith	01223 890750	Moules Lane
Bev Dole	01223 897919	Walden Road
Sarah Lockton	01223 892987	Walden Road

Shopping, delivery and collection of prescriptions, posting mail, dog walking, transport or just a chat on the phone.

Don't be shy, just ask!

Including the people above there are 31 people who have volunteered to help in Hadstock during this emergency. Please make use of us
Just phone for some help and one of us will be able to help you.

Thank you to all of you.

Normal Magazine service will be resumed as soon as possible
